

7.1.2 The Institution has facilities and initiatives for

- 1. Alternate sources of energy and energy conservation measures**
- 2. Management of the various types of degradable and non-degradable waste**
- 3. Water conservation**
- 4. Green campus initiatives**
- 5. Disabled-friendly, barrier free environment**

S. No.	Metric Details	Availability
1	Alternate sources of energy and energy conservation measures	Solar Panels, UPS, Diesel Generators, LED Bulbs.
2	Management of the various types of degradable and non-degradable waste	Solid waste segregation & management, e-Waste management, Napkin Incinerator
3	Water Conservation	Rain water harvesting, Rain water harvesting awareness programme, Reuse of water for gardening, Construction of Tanks and Bunds, Maintenance of water Bodies of Distribution system in the campus
4	Green campus initiatives	The green policy document is displayed in the website, "Campus cleaning day" on 5th of every month, Plant saplings in the gardening areas of the campus, Planting saplings in the public places, Cleaning the public places and creating awareness among the public, Donating plant saplings to the stakeholders and the society
5	Disabled-friendly, barrier free environment	Disabled Friendly western toilets, walking ramps, wheel chairs

1. Alternate sources of energy and energy conservation measures

- Solar Panels
- Uninterruptible Power Supply (UPS)
- Diesel Generator
- LED Bulbs

Solar Panels:

A Solar PV system is an alternate source of energy (electric) in the college, wherein a 3kW solar PV system has been installed on the rooftop of the buildings to reduce electric bill. Solar panels with photovoltaic cells work by absorbing energy from sunlight to generate direct current and then convert it into usable alternating current with the help of inverters. The solar panels help to reduce pollution and carbon footprint, run the institution sustainably and lower the dependence on electricity produced from coal power plants / non-renewable fossil fuels. This is a meaningful initiative, which we have taken for the benefit of the environment and human health. The institution receives subsidy of the total investment made in the solar panels. The institution avails electric power from solar panels sufficient to examination cell, computer labs and administrative room.



Electric bill payment saving:

Through the solar panels installed in the institution, an average of 8 units of current is generated per day, which is about 2,500 per year. The power utilized from solar set up minimizes the electric charges of Rs. 18,600/- per year paying to the Tamil Nadu Electric Board (TNEB). We have saved Rs. 94,400/- in the last five years through the utilization of the solar set-up.



SREE ABIRAAMI ARTS AND SCIENCE COLLEGE FOR WOMEN

APPROVED BY GOVT. OF TAMIL NADU / AFFILIATED TO THIRUVALLUVAR UNIVERSITY
 Accredited by NAAC with B++ | An ISO 9001:2015 Certified Institution
 KATPADI ROAD, KEELALATHUR, GUDIYATTAM – 635803, VELLORE DISTRICT, TAMIL NADU, INDIA
 Website: <https://sawcollege.com>, Phone : 04171-290222, Mobile : 7639003545/7639003546
 Mail id: abiraami.office@gmail.com / abiraami.college@gmail.com



Purchase Bills of solar panels:

SINE WAVE Power Solution & Electricals
 All kinds of Electrical Works

SINE WAVE POWER SOLUTION
 No. 7, A.E. Complex, Puzosai Street,
 (Near Casuarina Bazar), Gudiyattam,
 Gudiyattam, Vellore Dt. - 632 002

30/6/2016

3Kw Solar Inverter
 SUNAM 96VDC - ₹ 45,000/-

Batteries 100Ah * 8
 SUNAM - ₹ 48,000/-

2 KW Solar Panels
 SUNAM - ₹ 1,10,000/-

5 KW Grid tie Inverter
 SUNAM - ₹ 2,85,000/-

Installation (Rs. 5W)
 SUNAM - ₹ 35,000/-

Total = ₹ 2,22,000/-

Solar Gen To Inv

SUNAM

3Kw Grid tie Inverter - ₹ 2,85,000/-

Batteries 100Ah * 8 - ₹ 48,000/-

2 KW Solar Panels - ₹ 1,10,000/-

5 KW Grid tie Inverter - ₹ 2,85,000/-

Installation (Rs. 5W) - ₹ 35,000/-

Total = ₹ 7,28,750/-

On Grid system Connection
 fee with form

ROD 744,000 / year

SINE WAVE Power Solution & Electricals
 All kinds of Electrical Works

SINE WAVE POWER SOLUTION
 No. 7, A.E. Complex, Puzosai Street,
 (Near Casuarina Bazar), Gudiyattam,
 Gudiyattam, Vellore Dt. - 632 002

30/6/2016

Solar Panel 30watts
 SUNAM - ₹ 10,000/-

Solar Charge controller
 SUNAM - ₹ 4,000/-

Fabrication & frame, wiring charge
 SUNAM - ₹ 3,000/-

Total = ₹ 25,000/-

SINE WAVE Power Solution & Electricals
 All kinds of Electrical Works

SINE WAVE POWER SOLUTION
 No. 7, A.E. Complex, Puzosai Street,
 (Near Casuarina Bazar), Gudiyattam,
 Gudiyattam, Vellore Dt. - 632 002

30/6/2016

SUNAM

Sunway Solar Street Lighting
 9Wp LED - 1 No - ₹ 15,000/-

Sunway Solar Street Lighting
 15Wp LED - 1 No - ₹ 18,000/-

+ mechanical support pole

+ 2 wires connect

+ lithium ion battery inverter & solar panel

+ automatic battery control

Mechanical support pole 1 No - ₹ 2,000/-

Sunway solar street light 9W - 1 No - ₹ 15,000/-

Sunway solar street light 15W - 1 No - ₹ 18,000/-

Including all connection & pole

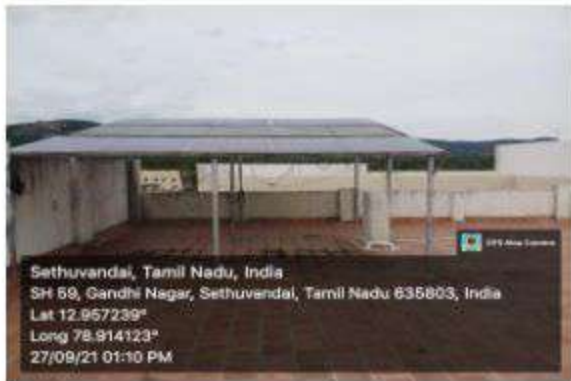
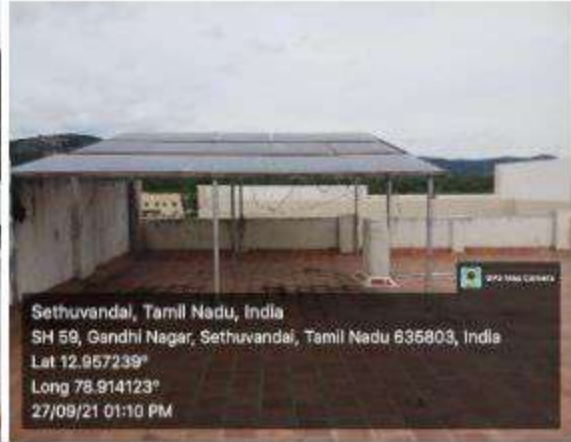
S. No.	Date	Particulars (On grid system)	Total cost
1		3KW Solar Inverter 96V DC	Rs. 45,000/-
2		Batteries (100A * 8)	Rs. 48,000/-
3		2 KW Solar panels	Rs. 1,10,000/-
4		5 KW Grid tie Inverter	Rs. 2,85,000/-
5		Installation (Rs. 5W)	Rs. 35,000/-
6	30-06-2016	Solar panel (300 Wp), Charge controller, Fabrication, Frame and Wiring charges	Rs. 25,000/-
7		Solar street Lighting (Sunway) 9Wp LED - 5 Nos.	Rs. 82,000/-
8		Solar street Lighting (Sunway) 15Wp LED - 5 Nos.	Rs. 97,250/-
9		Mechanical support pole	Rs. 1,500/-
Total			Rs. 7,28,750/-

Off Grid system generates 600 units/month
Return on Investment (ROI): Rs. 46,800/year

The reading unit of the solar panel is as follows:

Loading Unit	Output Unit
UPS 3500VA/480	UPS 3500VA/480
VOLT 55.0U	VOLT 55.0U
LOAD 014%	LOAD 011%
OUTPUT VOLT 220U	OUTPUT VOLT 219U
OUTPUT FREQUENCY 50HZ	OUTPUT FREQUENCY 50HZ

Images of solar Panels:





SREE ABIRAAMI

ARTS AND SCIENCE COLLEGE FOR WOMEN

Approved by Govt. of Tamil Nadu | Affiliated to Thiruvalluvar University, Vellore

Accredited by NAAC with "B++" Grade | An ISO 9001:2015 Certified Institution

Contact : +91 76390 03545 / 76390 03546 / 04171-290222

E-mail : abiraami.college@gmail.com / www.sawcollege.com

A report on Solar Power Utilization

Solar Panels

A Solar PV system is an alternate source of energy(electric) in the college, where in a 3kV solar PV system has been installed on the roof top of the buildings to reduce electric bill. Solar panels with photovoltaic cells work by absorbing energy from sunlight to generate direct current and then convert it into usable alternating current with the help of inverters. The solar panels help to reduce pollution and carbon footprint, run the institution sustainably and lower the dependence on electricity produced from coal power plants / non-renewable fossil fuels. This is an meaningful initiative, which we have taken for the benefit of the environment and human health. The institution receives subsidy of the total investment made in the solar panels. The institution avails electric power from solar panels sufficient to examination cell, computer labs and administrative room.



Electric bill payment saving:

Through the solar panels installed in the institution, an average of 8 units of current is generated per day, which is about 2,500 per year. The power utilized from solar set up minimizes the electric charges of Rs.18,600/-per year paying to the Tamil Nadu Electric Board(TNEB). We have saved Rs.94,400/- in the last five years through the utilization of the solar set-up.

N. Subramanyam
[SUBRAMANI.N]
ELECTRICIAN

V. Anand



PRINCIPAL,
SREE ABIRAAMI ARTS AND SCIENCE COLLEGE FOR WOMEN
GUDIYATTAM - 635 803,
VELLORE DISTRICT.

Uninterruptible Power Supply (UPS):

The power generated through solar panels is stored in the UPS of 10 kV capacity placed under the steps in the ground floor near the Abiraami block entrance portico. The stored energy will be supplied to the Academic director room (Room no. 102), Exam cell (Room no. 103), Computer lab – I (Room no. 220) & II (Room no. 320) and IQAC room (Room no. 115).



Diesel Generator

Our Institution provides a Diesel generator with the capacity of 63 kV. The Filling capacity of the Diesel Generator is 160 L. It will take 9 L for one Hour to supply an electrical output with unidirectional voltage and current. When the electricity is limited in the college, or the power is cut off for other reasons, it may affect the teaching-Learning progress. The standby power diesel generator set can provide continuous power for the study purpose in the college.



LED Bulbs

The total lighting (luminary) load of the college is about 5040 kW, which includes Fluorescent tubes 40 W, LED lights 18 W etc. LED lights are very good alternate source of electrical energy conservation. In the college campus, LED bulbs are preferably used and whenever 36 W / 40 W tube lights gone (not in warranty period) then it could be replaced by 18 W LED tube light. The institution focuses to utilize the less energy consuming electrical goods everywhere in order to conserve energy. The energy conservation practice is inculcated among the stakeholders of the institution.



LED Lights in Computer Lab
(Room No. 220)



LED Lights in Smart Class
(Room No. 103)



LED lights in the Department of computer
science



LED lights in the admin (office)
room located in Admin block



LED lights in the classrooms located in Admin block



LED lights in the board room located in Admin block

2. Management of the various types of degradable and non- degradable waste

Degradable waste:

Degradable waste is a material which gets decomposed through natural processes. So, the peels of vegetables, fruits, waste wood and waste papers are collected and deposited in the degradable garbage. They are dumped in the pits and burnt during holidays. The ash uses as manure for the organic farming. The napkins are incinerated. The dried leaves are spread under the trees, which will slowly decompose on watering and become manure.

Non -degradable waste:

Non-degradable substances are materials which do not degrade easily (biologically). The broken glass, plastic bottles, metals, plastic bags and carbon paper are collected and deposited in the non-degradable garbage. In our College campus the wastage are disposed through land filling methods.



Red Color Dustbin for non-degradable wastes

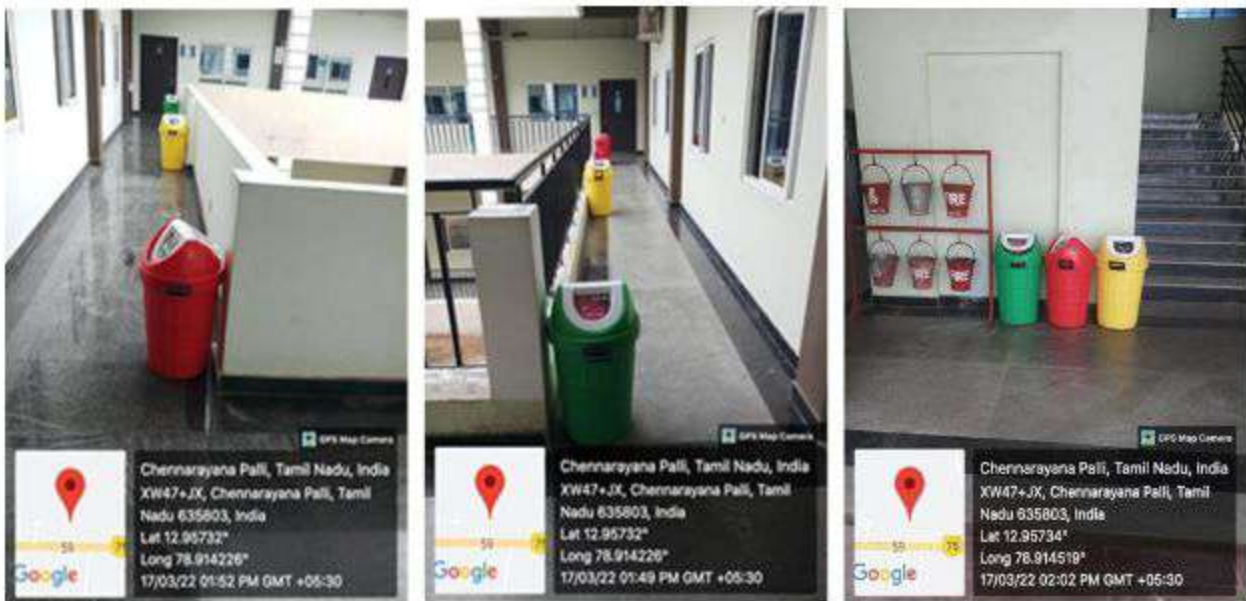
Green color for Degradable wastes

Dustbins are kept in all classrooms, staff rooms, laboratories and washrooms in order

to collect the bio-degradable wastes in the respective places. A set of three different colour large sized dustbins (Green, red, yellow) are kept in the middle of each floor. All the stakeholders are educated to discard the wastes in the respective dustbins. The collected wastes are properly discarded and maintained. The same rules are followed in the canteen.



Dustbin for bio-degradable waste in every classroom



Segregation of solid wastes – Different colour dustbins in every floor

e-Waste Management:

The electronic wastes from the computer lab are used to keep in a separate room and given to Sri Sivam Shakthy Computers every year.



Sri Sivam Shakthy Computers
Sales • Service • Networking • PC/Software • Troubleshooting


Mail : manojee05@gmail.com Contact : 98439 23911, 70107 11824
Web : manojee.com

To : _____ Date: 9/4/19

S.No.	Particulars	Qty	Amount
1.	RAM	6	90
2.	SMPS	6	300
3.	MOUSE	8	20
4.	KEY BOARD	6	60
			Total
			530

Remarks: _____ Signature: *Njmy*

#22/C, R.S.Road, Opp Krishna Swamy Matric School, Gudiyattam-632 602. Vir. Dt.,
Thank you for your business



Sri Sivam Shakthy Computers
Sales • Service • Networking • PC/Software • Troubleshooting

Mail : manojee05@gmail.com Contact : 98439 23911, 70107 11824
Web : manojee.com

To : _____ Date: 5/4/18

S.No.	Particulars	Qty	Amount
1.	Keyboard	3	60
2.	RAM	4	60
3.	power cable 1kg	-	200
4.	Monitor	1	100
			Total
			420

Remarks: _____ Signature: *Njmy*

#22/C, R.S.Road, Opp Krishna Swamy Matric School, Gudiyattam-632 602. Vir. Dt.,
Thank you for your business



Sri Sivam Shakthy Computers
Sales • Service • Networking • PC/Software • Troubleshooting


Mail : manojee05@gmail.com Contact : 98439 23911, 70107 11824
Web : manojee.com

To : _____ Date: 6/4/21

S.No.	Particulars	Qty	Amount
1.	Keyboard	3	60
2.	Mouse	4	40
3.	Monitor	1	100
4.	SMPS	3	150
5.	power cable 1kg	-	250
			Total
			600

Remarks: _____ Signature: *Njmy*

#22/C, R.S.Road, Opp Krishna Swamy Matric School, Gudiyattam-632 602. Vir. Dt.,
Thank you for your business



Sri Sivam Shakthy Computers
Sales • Service • Networking • PC/Software • Troubleshooting

Mail : manojee05@gmail.com Contact : 98439 23911, 70107 11824
Web : manojee.com

To : _____ Date: 01.04.2022

S.No.	Particulars	Qty	Amount
1.	RAM	3	45
2.	SMPS	5	350
3.	power cable	10	50
4.	Mouse	2	20
5.	Hard disk	1	50
6.	Switch Network	1	50
			Total
			565

Remarks: _____ Signature: _____

#22/C, R.S.Road, Opp Krishna Swamy Matric School, Gudiyattam-632 602. Vir. Dt.,
Thank you for your business



Napkin Incinerator:

Napkin incinerators are kept in all the ladies washrooms and the instructions are educated to all the stakeholders for the proper maintenance and hygiene.



Napkin Incinerator

The chemicals coming of the chemistry lab is collected in a separate underground tank, sedimented and then used for irrigation. The washing water are directly flow into the farming areas through the pipes.

3. Water Conservation

3. Water Conservation

3.1 Rain Water Harvesting

The institution is built with rain water harvesting specialties. The rain water collected from the roof through the pipes is percolated into the deep pits filled with soil and gravels across the walls in order to raise the ground water level.



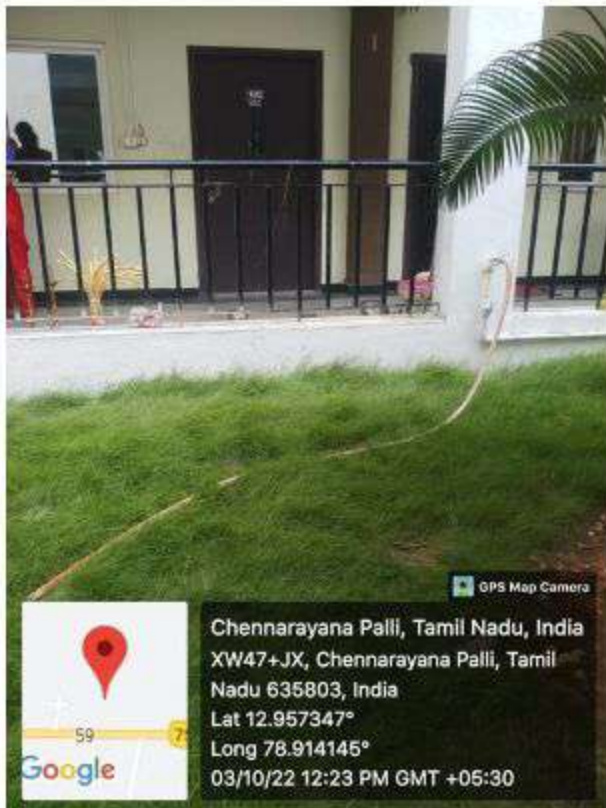
Rain Water Harvesting



Water Conservation – Rain water harvesting



Water Conservation – Hand wash water utilizing for conservation and gardening



Waste water from RO using for gardening

NSS team in collaboration with Central Govt. Organization Nehru Yuvakendra, Vellore Branch organized “Rain water harvesting awareness programme” in the College campus on 24.12.2021. In this event, the Students were participated & enriched with knowledge on the importance of water and water conservation.



3.2 Bore well

The college has bore well of about 1000 ft depth. The bore well water bring out through 6 inches diameter pipe by using 15Hp motor, stored in the tanks available in the building roof, which then used for cattle farms, cleaning purposes, irrigation, washrooms, chemistry lab and canteen through the ½ inch pipe lines. The water used for drinking purposes after RO processed. The pipe lines are periodically monitored and maintained ensuring the leakage-free and waste of water. The flushes in the toilets are also properly maintained to minimize the water wastage.



Construction of Tanks and Bunds

A Water tank with a capacity of 12000 liters is set-up in the roof of the college building.

The capacity of each tank is 3000 liters and the total availability of water tanks is 4.



Maintenance of water Bodies of Distribution system in the campus

The institution practices effective reuse of waste water from RO plant is being used for irrigating the green areas.



4. Green Campus Initiatives

Green policy document:

https://sawcollege.com/pdf/about/policy/environmental_policy/Green%20campus%20policy.pdf

Green Campus initiatives in the institution:

- The institution is maintaining more than 25% of the green cover area after building construction to provide a healthy environment and ecofriendly atmosphere to the stakeholders. It is calculated that the natural vegetation was 55% and planted vegetation was 45%.
- The Eco club and Green Campus cell of the institution involves the students in planting useful herbal plants.
- The institution is planted with many flowering and non- flowering plants. The green vegetation is also utilized in growing farm animals.
- The campus has a maximum number of more oxygen releasing and carbon dioxide assimilating plants *Azadirachta indica* (Neem), *Terminalia catappa* and *Ficus religiosa* are found to be oxygen releasing plant. *Hibiscus rosa-sinensis*, *Aloe vera* and *Tabernaemontana divaricate* are CO₂ assimilating plants including some of the shrub and herbal plants.
- Vermicompost production may be increased substantially using tree leaf litter, kitchen wastes and biodegradable waste materials available in the campus. The vermicompost manure can be used for plant cultivation and the excess amount of vermicompost may be sold in the local market as consultation work.
- The institution inculcates Miyawaki Forest system among the students, one student one plant concern to enrich the campus Green which provides an ecofriendly campus to the stakeholders.
- Green campus cell initiates the Clean Campus Campaign on 5th every month. The cell educates and promotes the civic sense and cleanliness among the students. Students are advised to discard the wastes properly as prescribed.



SREE ABIRAAMI ARTS AND SCIENCE COLLEGE FOR WOMEN

APPROVED BY GOVT. OF TAMIL NADU / AFFILIATED TO THIRUVALLUVAR UNIVERSITY
Accredited by NAAC with B++ | An ISO 9001:2015 Certified Institution
KATPADI ROAD, KEELALATHUR, GUDIYATTAM – 635803, VELLORE DISTRICT, TAMIL NADU, INDIA
Website: <https://sawcollege.com>, Phone : 04171-290222, Mobile : 7639003545/7639003546
Mail id: abiraami.office@gmail.com / abiraami.college@gmail.com



Clean Campus Campaign



SREE ABIRAAMI ARTS AND SCIENCE COLLEGE FOR WOMEN

APPROVED BY GOVT. OF TAMIL NADU / AFFILIATED TO THIRUVALLUVAR UNIVERSITY

Accredited by NAAC with B++ | An ISO 9001:2015 Certified Institution

KATPADI ROAD, KEELALATHUR, GUDIYATTAM – 635803, VELLORE DISTRICT, TAMIL NADU, INDIA

Website: <https://sawcollege.com>, Phone : 04171-290222, Mobile : 7639003545/7639003546

Mail id: abiraami.office@gmail.com / abiraami.college@gmail.com



Plant sapling Event:

SREE ABIRAAMI
ARTS AND SCIENCE COLLEGE FOR WOMEN
APPROVED BY GOVT. OF TAMIL NADU / AFFILIATED TO THIRUVALLUVAR UNIVERSITY
KATPADI ROAD, KEELALATHUR, GUDIYATTAM – 635803, VELLORE DISTRICT, TAMIL NADU, INDIA

A report
On
PLANTING A SAPLING
Organized by
GREEN CLAMP CELL, GCC

At Sree Abiraami Arts and Science College for Women College, Gudiyattam, Green campus with Viharavaram was observed college campus on 02.08.2022. We are doing an many activities in GCC. In that day Our chairman Dr. M. Juthaliaman, Vice-Chairman Dr. Ranganath, Principal R.S.Venkat were planting a different plants in our college entrance. The Green Campus cell students from all the departments were planting a sapling plants.

M. VENKATASUBRAMANIAN
 G.C.C. COORDINATOR
 (Dr. M. Venkatasubramanian)

C. PRAVEEN KUMAR
 OVERALL COORDINATOR
 (Dr. C. Praveen Kumar)

R. S. VENKATESH
 PRINCIPAL
 THE PRINCIPAL OFFICE, SREE ABIRAAMI ARTS AND SCIENCE COLLEGE FOR WOMEN
 KATPADI ROAD, KEELALATHUR,
 VELLORE DISTRICT.




M. VENKATASUBRAMANIAN
 G.C.C. COORDINATOR
 (Dr. M. Venkatasubramanian)

C. PRAVEEN KUMAR
 OVERALL COORDINATOR
 (Dr. C. Praveen Kumar)

R. S. VENKATESH
 PRINCIPAL
 THE PRINCIPAL OFFICE, SREE ABIRAAMI ARTS AND SCIENCE COLLEGE FOR WOMEN
 KATPADI ROAD, KEELALATHUR,
 VELLORE DISTRICT.

A report on Planting Saplings in K.A. Mottur Village

IQAC in association with National Social Service (NSS) unit has taken the NSS student volunteers of the institution to K.A. Mottur village to plant the saplings on 13th August, 2022 on behalf of 75th Independence Day. In presence of the Village Panchayat President Mr. B R Suresh, BBA, LLB, the students have planted around 25 plants in the public places of the village and donated few saplings among the public living in the village.

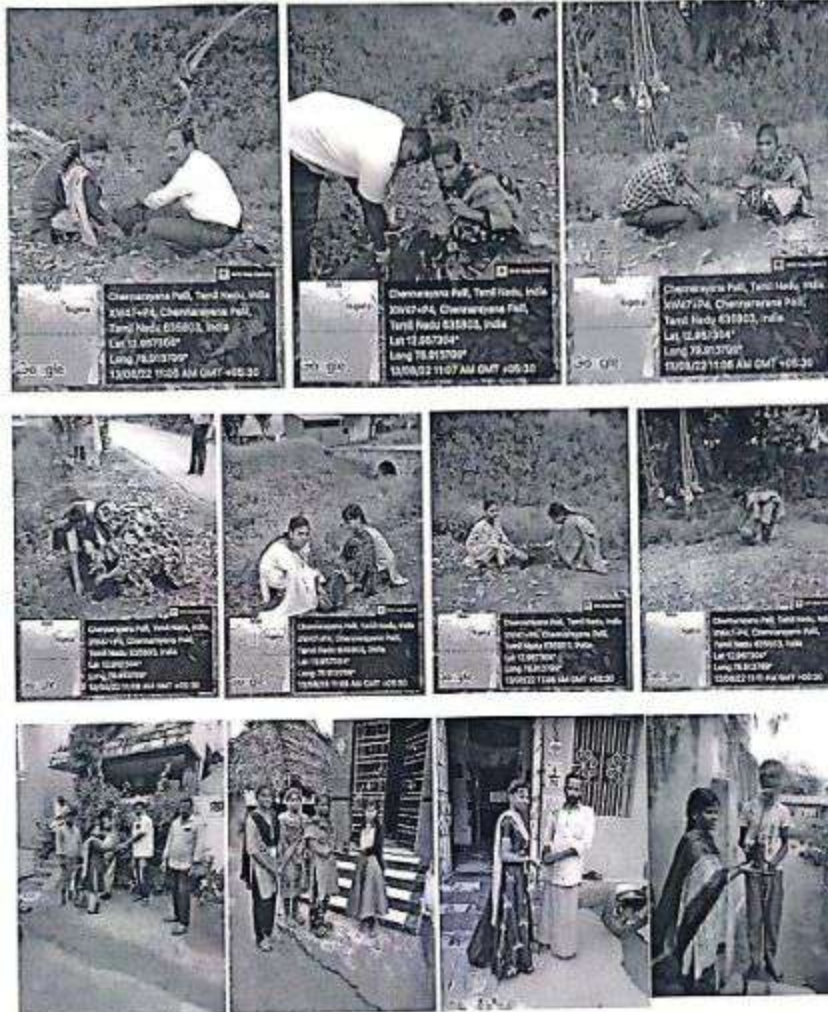




A report on Planting Saplings in K.A. Mottur Village

IQAC in association with National Social Service (NSS) unit has taken the NSS student volunteers of the institution to K.A. Mottur village to plant the saplings on 13th August, 2022 on behalf of 75th Independence Day. In presence of the Village Panchayat President Mr. B R Suresh, BBA, LLB, the students have planted around 25 plants in the public places of the village and donated few saplings among the public living in the village.





M. Y - VJ
13/08/2022
IQAC Coordinator

D. Anitha
13/8/22
NSS Coordinator

Principal
13/8/22



SREE ABIRAAMI ARTS AND SCIENCE COLLEGE
GUDIYATTAM - 635 803,
VELLORE DISTRICT.



SREE ABIRAAMI ARTS AND SCIENCE COLLEGE FOR WOMEN

APPROVED BY GOVT. OF TAMIL NADU / AFFILIATED TO THIRUVALLUVAR UNIVERSITY
Accredited by NAAC with B++ | An ISO 9001:2015 Certified Institution
KATPADI ROAD, KEELALATHUR, GUDIYATTAM – 635803, VELLORE DISTRICT, TAMIL NADU, INDIA
Website: <https://sawcollege.com>, Phone : 04171-290222, Mobile : 7639003545/7639003546
Mail id: abiraami.office@gmail.com / abiraami.college@gmail.com



A report on Cleaning the Robinson Lake

IQAC in association with National Social Service (NSS) unit has taken the NSS student volunteers of the institution to **Robinson Lake**, Gudiyattam to clean and plant the saplings on 5th of Every month. In the presence of Town Chairman T M Soundarajan, the students have cleaned and planted the sapling. He always inspires the students about water conservation and hygienic environment.



[Signature]
PRINCIPAL
SREE ABIRAAMI ARTS AND SCIENCE COLLEGE FOR WOMEN
GUDIYATTAM - 635 803,
VELLORE DISTRICT.



நற்சான்றிதழ்

குடியாத்தம், பூநீ அபிராமி மகளிர் கலை மற்றும் அறிவியல் கல்லூரியின் சுற்றுச்சூழல் கிளப் (Eco Club), பசுமை வளாக செல் (Green Campus Cell) மற்றும் NSS அமைப்பின் சார்பாக குடியாத்தம் நகராட்சிக்கு உட்பட்ட ராபின்சன் குளம் "ஒரு கணம் தூய்மை" எனும் பார்வையில் 06.03.2023 அன்று முற்பகல் 10.30 மணியளவில் சுத்தம் செய்யப்பட்டதை அறிந்தேன். பூநீ அபிராமி கல்லூரியின் சுற்றுச்சூழல் கிளப் (Eco Club), பசுமை வளாக செல் (Green Campus Cell) மற்றும் NSS அமைப்பைச் சார்ந்த ஆசிரியர்கள் மற்றும் மாணவிகள் ராபின்சன் குளத்தை சுற்றியுள்ள பகுதிகளை தூய்மை செய்து மரக்கன்றுகளை நடட்டனர். இதேபோன்று அவர்கள் தின்னும் நற்பல பணிகளை செய்ய வாழ்த்துக்கள் வழங்கியும், ராபின்சன் குளத்தில் வரலாற்று வின்யூஸ் பற்றியும், மழைநீர் சேமித்தல், இயற்கை வளம் காத்தல் முதலான விழிப்புணர்வு செய்திகளை மாணவியர்களுக்கு தெரிவித்து சான்று வழங்கப்பட்டது.

குடியாத்தம்
நாள்: 06.03.2023

எஸ்.செனத்திராசாண்டி.டி.

செ. செனத்திராசாண்டி

நகரமன்ற தலைவர்

குடியாத்தம் நகராட்சி

நகரமன்ற தலைவர்

குடியாத்தம் நகராட்சி.

5. Disabled-friendly, barrier free environment

The Institution has facilities such as wheel chairs, disabled friendly washroom, ramps and hand rails for the differently abled students. The less inclined ramps are user friendly for the wheel chair users. The hand rails are firm, easy to grip and mounted at short length above the ground which shall be accessible by the people of all heights. The Institution ensures the barrier Free Environment, which enables people with disabilities to move safely and freely by using the facilities.

Disabled Friendly Washroom



Ramps



Wheel Chairs

